

ADVISORY NO. 047 2018

In response to the correspondence of International Institute of Rural Reconstruction (IIRR) dated April 2, 2018, this advisory is issued for the information of division level administrators and program planners.

April 13, 2018

**INVITATIONAL ATTENDANCE TO THE ACTION RESEARCH PROJECT
ON IMPROVING FOOD AND NUTRITION SECURITY IN THE PHILIPPINES
THROUGH SCHOOL INTERVENTION OF INTERNATIONAL INSTITUTE
OF RURAL RECONSTRUCTION**


This office announces the invitation of the International Institute of Rural Reconstruction to the Action Research Project on **“Improving Food and Nutrition Security in the Philippines through School Interventions”** on May 8, 2018 at IIRR, Y.C. James Yen Center, Silang, Cavite.

Participants are the division level administrators and program planners from the 20 Schools Division Offices in CALABARZON. Confirmation of delegates on or before April 27, 2018 will be highly appreciated.

All expenses shall be borne personally by participants and on official time only.

Attached herewith are the correspondence, the activity design and the project summary from the International Institute of Rural Reconstruction for information and appropriate action.

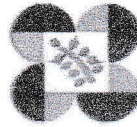
For further queries, please contact Ms. Kirstein D. Itliong, Research Assistant at mobile no. +63 916- 6649- 163 or via email at kirstein.itliong@iir.org.


DORIS D.J. ESTALILLA, Ed.D.
Officer-In-Charge
Schools Division Superintendent

To: All SDSs:

For your information and appropriate
action, please.

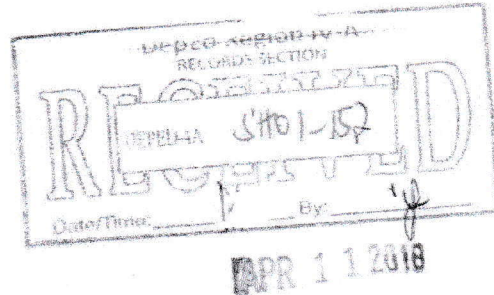
Thanks,
Ann 4-11-18



"Improving Food and Nutrition Security in the Philippines through School Interventions"

2 April 2018

DIOSDADO M. SAN ANTONIO
Regional Director
Department of Education-CALABARZON



Dear Director San Antonio:

Greetings from the International Institute of Rural Reconstruction!

In early March, IIRR organized a half day conference in Silang, Cavite to present to various stakeholders the results and outputs of the action research entitled "Improving Food and Nutrition Security in the Philippines through School Interventions". However, the event was moved to 2nd quarter of 2018. The research project jointly implemented by IIRR, DepEd and FNRI-DOST with support from other agencies had generated data and information that are useful to DepEd program planners and decision makers as well as to other institution supporting school nutrition programs. The integrated school nutrition model that was developed through the action research project aims to link different nutrition interventions (school gardens, school feeding and nutrition education) for better results and sustained nutrition outcomes for Filipino school children.

Thus, IIRR is pleased to invite division level administrators and program planners from the 20 Schools Division Offices of CALABARZON (please see attached Table 1) on the said event to be held on May 8, 2018 at IIRR, Y.C James Yen Center Silang, Cavite. We would also like to take this opportunity to recognize the 58 lighthouse schools, thus, we are also inviting the 58 school principals to be with us during the conference (table 2). Attached herewith is the activity design and project brief for your reference, program of activities will follow.

We are looking forward to your favorable response. **Confirmation of delegates on or before April 27, 2018 will be highly appreciated.** For inquiries or clarification, you may directly contact Ms. Kirstein D. Itliong, research assistant at +63 916 6649163 or kirstein.itliong@iirr.org. Thank you so much!

Sincerely,

Emilita Monville Oro, RN, MPH
Country Director, Philippine Program
International Institute of Rural Reconstruction

Table 1. Schools Division level administrators/supervisors/program planners

Level of Governance	Designation	Number
Schools Division Office	• Schools Division Superintendent - DORIS D. ESTALEDA per SPAD	
	• School Governance & Operations Division Chief - JOSE CHARLES S. ALOQUIN Ph.D	
	• School Health and Nutrition Chief - MARIO O. RAMILDO	
	• Curriculum Implementation Division Chiefs - EDNA F. HERNANDEZ Ed.D	
	• Education Program Supervisors, EPP/TLE - GRACE C. ENDAÑA Ed.D	

Table 2. School principals of the Lighthouse Schools in CALABARZON.

Division	District	School	EPS/ Principal
CAVITE			
Cavite Province	N/A	N/A	EPS Romeo E. Endraca
	Alfonso	Upli ES	Marina P. Mojica
	Amadeo	Dagatan ES	Liezl M. Bautista
	Amadeo	Amadeo ES	Elvira Ambagan
	Amadeo	Mariano Anakay ES	Janine A. Costa
	Carmona	Carmona ES	Wilhelmina L. Magboo
	Gen. E. Aguinaldo	Bailen ES	Eva R. Malimban
	General Trias I	General Gregorio S. Aloña Sr. MES	Nacitas V. Grepó
	General Trias II	Sunnybrooke ES	Josephine M. Monzaga
	GMA	San Gabriel 2 ES	Dr. Ernesto B. Esguerra
	Indang I	Indang CS	Lorena A. Custacio
	Indang II	Alulod ES	Dr. Rosena O. Rozul
	Kawit	Poto! Sta. Isabel ES	Noema V. Quintino
	Magallanes	Medina ES	Shiela B. Bello
	Magallanes	Magallanes CS	Lorna B. De Taza
	Maragondon	Maragondon ES	Daisy P. Feranil
	Mende	Panungyan ES	Joseph Tito N. Ocampo
	Naic I	Naic CS	Raymunda A. Cailao
	Naic II	San Roque ES	Gregoria S. Atas
	Noveleta	Noveleta ES	Marietta P. Esequé
	Rosario	Bagbag 2 ES	Susan A. Guanzon
	Silang I	Kalubkob ES	Cristina V. Panganiban
	Silang I	BSSPES	Alicia P. Francisco
	Silang I	Maguyam ES	May M. Batuhan
	Silang II	Pulong bunga	Vivian M. Ambat
	Silang II	Malabag ES	Gina A. Lejos
	Tagaytay	Carlos Batino MES	Teresita R. Bagay
	Tagaytay	Isidro Cuadra ES	Silverio R. Javier
Tanza	Julugan ES	Dr. Rea C. Famorcan	
Ternate	Ternate CS	Carmina S. Lajom (OIC)	
Trece Martires City	Lapidario ES	Joie E. Buendia	
Bacoor City	N/A	N/A	EPS Galileo L. Go
	Bacoor II	Talaba ES	Nathaniel D. Rustique
	Bacoor I	Bacoor CS	Milagros E. Vinluan
	N/A	Malipay ES	Analy G. Bato
	Mabolo I	Mabolo ES	Ma. Belen A. Tinio
Imus City	N/A	N/A	EPS Rolando B. Talon, Jr.
	Cluster I	Imus Pilot ES	Jocelyn A. Limosinero
	Cluster II	Governor Camerino ES	Danielyn G. Siwa

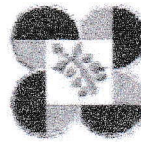
Division	District	School	EPS/ Principal
Dasmariñas City	Cluster III	Tinabunan ES	Jesus V. Bergado
	N/A	N/A	EPS Virgilio O. Guevarra, Jr.
	Cluster V	Dasmariñas II CS	Nicomedez V. Macaraeg
	Cluster VIII	Dr. Jose P. Rizal ES	Delia P. Cerbito
	Cluster II	Langkaan ES	Randy G. Mendoza
	District III	Malinta ES	Dr. Rochelle I. Pacatang
Cavite City	District IX	Paliparan ES	Cristino M. Tuliao
	N/A	N/A	EPS Yolanda S. Oliver
	N/A	Sangley ES	Marilou A. Galgo
LAGUNA			
Laguna Province	N/A	N/A	EPS Lamberto Perolina
	Liliw	Liliw CES	Annabelle R. Castro
	Majayjay	Majayjay ES	Myrna G. Dorado
Sta. Rosa City	N/A	N/A	EPS Edwina Nabo
	District II	Caingin ES	Guadalupe R. Factoriza
Biñan City	N/A	N/A	EPS Lani A. Alonde
	Cluster 1	Timbao ES	Emmanuelita J. Alonde
Calamba City	N/A	N/A	PDO Ariel DP Antonio
	East I Cluster I	Eduardo Barretto Sr. ES	Eder I. Gallego
San Pablo City	N/A	N/A	EPS Emerita Perez
	Fule Almeda	San Roque ES	Pablo F. Urgena
BATANGAS			
Batangas Province	N/A	N/A	EPS Macaria Carina C. Carandang
	Lemery	Ayao-Iyao ES	Marife M. Alcantara
	San Jose	Pinagtungulan ES	Nida T. Mendoza
Batangas City	N/A	N/A	EPS Nancy T. Festijo
	District IV	Malitam ES	Leoncia B. Espina
Lipa City	N/A	N/A	EPS Alberto M. Laroza
	North District	Lumbang ES	Merlita R. Castro
Tanauan City	N/A	N/A	GPP Coordinator Romel Villanueva
	East District	Tinurik ES	Maricel A. Malabanan
RIZAL			
Rizal Province	N/A	N/A	EPS Rodel Cadiente
	Tanay	Wawa ES	Daniel S. Custodio
	Binangonan	Binangonan ES	Corina DJ. Condez
Antipolo City	N/A	N/A	EPS Melanie Burgonia
	Kaysakat	Kaysakat ES	Dr. Maricel R. Tortoza
QUEZON			
Quezon Province	N/A	N/A	MHO Maria Rosario Camilon
	San Antonio	San Antonio CS	Josefina C. Ladines
	Pitogo	Pitogo CS	Merlinda G. Arellano
	Pitogo	Bukal Sur ES	Josephine Arquiza
Tayabas City	N/A	N/A	EPS Louie Fulleo
	North	North Palale ES	Teresa E. Andaya
Lucena City	N/A	N/A	EPS Janelet Fuentes
	East	Lucena East III ES	Hazel T. Abanto



"Improving Food and Nutrition Security in the Philippines through school interventions"

Activity Design

Title of Activity	Fostering Healthy Schools with Integrated School Nutrition Program				
<p>Rationale</p>	<p>In 2012 to 2015, IIRR in collaboration with DepEd Division of Cavite and FNRI-DOST implemented an action research project to strengthen the school nutrition program. The integrated school nutrition model that links school gardens, supplementary feeding and nutrition education (GarNESupp) was developed as an approach to address nutrition insults among school children. The model builds on existing nutrition interventions of DepEd with emphasis on sustainability and synergy of programs. Supplementary feeding included iron-fortified rice and indigenous vegetables from school gardens. To improve the consumption and acceptance of indigenous vegetables, standardized recipes of indigenous vegetables were developed and used in the feeding program. The school gardens were enhanced with agro-ecological technologies such as bio-intensive gardening to improve productivity and sustainability for use in the supplementary feeding and learning. Nutrition education was delivered in different modalities for children and caregivers to foster healthy eating habits for children both at school and home. During this phase, ways to bridge the various nutrition-related programs were implemented which resulted to positive nutrition outcomes in the selected study schools.</p> <p>A follow through 28-month action research project was launched in February 2016 that aims to fine tune and scale up the model in Philippines school system through a multi scalar approach and use schools as platform for nutrition and environmental learning and sharing. Fine tuning of the model includes the implementation of a 200-day feeding program to identify the value of additional 80 days. The scaling up relies largely on the 58 lighthouse schools (LS) established in Region IVA. LS are learning sites for other schools, action research sites and source of planting materials. This component of the program documented the processes and strategies involved in scaling up the model. Now that the project reached the phase where it generated data and information useful to DepEd program planners and other agencies supporting or implementing nutrition programs, the project is organizing an important event to present results to key stakeholders.</p>				
<p>Date and Venue</p>	<p>May 8, 2018 Y.C. James Yen Center, Silang, Cavite</p>				
<p>Participants</p>	<p>220 delegates</p> <table border="0"> <tr> <td> <ul style="list-style-type: none"> DepEd Central Office • Office of the Secretary • Undersecretary for External Partnership Services • Undersecretary for Administration • Bureau of Learner Support Services • Bureau of Curriculum Development </td> <td> <ul style="list-style-type: none"> • School Health and Nutrition • Curriculum Implementation Division Chiefs • Education Program Supervisors, EPP/TLE </td> </tr> <tr> <td> <ul style="list-style-type: none"> DepEd Regional Offices DepEd CALABARZON Division Offices • Schools Division Superintendent • School Governance & Operations Division Chief </td> <td> <ul style="list-style-type: none"> CALABARZON Lighthouse -School heads DSWD CALABARZON DSWD MIMAROPA Food & Nutrition Research Institute Department of Agriculture-BPI Department of Agriculture-Reg 4A Non-Government Organizations Media </td> </tr> </table>	<ul style="list-style-type: none"> DepEd Central Office • Office of the Secretary • Undersecretary for External Partnership Services • Undersecretary for Administration • Bureau of Learner Support Services • Bureau of Curriculum Development 	<ul style="list-style-type: none"> • School Health and Nutrition • Curriculum Implementation Division Chiefs • Education Program Supervisors, EPP/TLE 	<ul style="list-style-type: none"> DepEd Regional Offices DepEd CALABARZON Division Offices • Schools Division Superintendent • School Governance & Operations Division Chief 	<ul style="list-style-type: none"> CALABARZON Lighthouse -School heads DSWD CALABARZON DSWD MIMAROPA Food & Nutrition Research Institute Department of Agriculture-BPI Department of Agriculture-Reg 4A Non-Government Organizations Media
<ul style="list-style-type: none"> DepEd Central Office • Office of the Secretary • Undersecretary for External Partnership Services • Undersecretary for Administration • Bureau of Learner Support Services • Bureau of Curriculum Development 	<ul style="list-style-type: none"> • School Health and Nutrition • Curriculum Implementation Division Chiefs • Education Program Supervisors, EPP/TLE 				
<ul style="list-style-type: none"> DepEd Regional Offices DepEd CALABARZON Division Offices • Schools Division Superintendent • School Governance & Operations Division Chief 	<ul style="list-style-type: none"> CALABARZON Lighthouse -School heads DSWD CALABARZON DSWD MIMAROPA Food & Nutrition Research Institute Department of Agriculture-BPI Department of Agriculture-Reg 4A Non-Government Organizations Media 				
<p>Objectives</p>	<p>The action research project on the Integrated School Nutrition Model is near to completing its research objectives and the planned Conference aims to achieve the following:</p> <ol style="list-style-type: none"> 1. Provide a platform to share the research results to program planners of DepEd and other agencies with nutrition and related interventions such as DSWD and DA 2. Mainstream food, nutrition and agriculture issues and breakthroughs through media 3. Identify ways forward on scaling out the Integrated Nutrition Model 				



IDRC

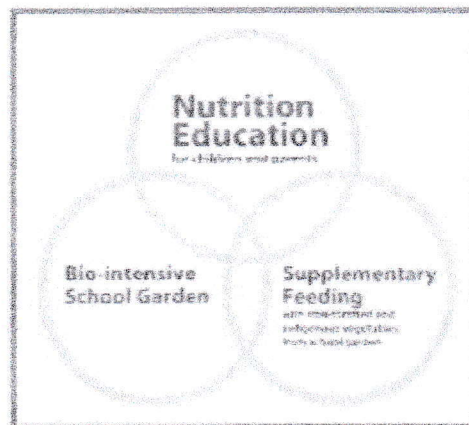


CRDI

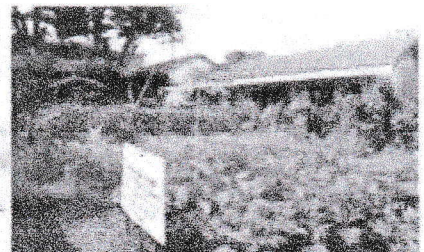
"Improving Food and Nutrition Security in the Philippines through school interventions"

Project Summary

The 2013 national nutrition survey revealed that underweight prevalence among 5-10.0 years of age is higher (29.1%) than in other age group. For stunting (low height-for-age), although there's an improvement since the last survey in 2011, it is still at 29.9%; and wasting (low weight-for-height) is at 8.6%, about the same in 2011 at 8.5%. Clearly, this is a reason for concern and fortunately this situation has in recent years been brought to the attention of the country's planners, policy makers and legislators.



The integrated school nutrition model that links 3 interventions was developed to maximize the potential of schools as platform to address food and nutrition challenges. (i) **Supplementary feeding** used iron-fortified rice and indigenous vegetables from school gardens. Recipes with indigenous vegetables were developed and used. (ii) **School gardens** were enhanced with agro-ecological technologies such as bio-intensive gardening to improve productivity and sustainability of gardens. Various (iii) **Nutrition education** methodologies were conducted for children and caregivers. The model was developed through an action research project implemented in 2012 to 2015 in a single province with support from the International Development Research Centre. The model builds on existing nutrition interventions of the Department of Education (DepEd) with emphasis on sustainability and synergy of programs. The follow through 28-month action research project aims to



fine tune the model, to test a multi-scalar approach to scale up the model in Philippines school system, and to use schools as platform for nutrition and environmental learning and sharing. The partnership of International Institute of Rural Reconstruction (IIRR), DepEd and Food and Nutrition Research Institute - Department of Science and Technology (FNRI-DOST) resulted to achievement of significant milestones in the past 24 months.

Implementation guidelines were put together to support operationalization of the model and ensure strongly integrated components. Three sentinel research schools in Cavite province were selected for the purposes of rigorous data collection and further adaptation of the model. In the 3 sentinel research schools, the 120-day school feeding program resulted to a significant increase in the mean weight of students from baseline to endline. The extended feeding program or additional 80 days that was implemented in 3 sentinel research schools resulted to further significant increase in the mean weight and height of the students in both age groups and gender. Same result was also observed in the mean height of students in older age groups and gender. Mechanisms to ensure links of the 3 components were documents and will be used to enhance the guideline.

The scaling up relies largely on 58 lighthouse schools (LS) established in Region IVA. The region is composed of 5 provinces subdivided by DepEd into 20 school divisions catering to 2,732 public elementary schools. LS are learning sites for other schools and action-research sites for evidence-building. Data showed that LS are implementing the integrated model at different levels. Garden diversity has been achieved in most schools and the link between gardens to feeding and learning were evident. LS were able to train other schools within their respective districts/divisions. At the same time, these 58 LS are also school crop museums (CM). School crop museums are decentralized conservation sites and nurseries of hardy and nutritionally dense indigenous or local vegetables. Additional 237 crop museums in Region IVA were set up to complement the scaling out efforts. Various strategies and strategic events were carried out such as multi-stakeholder events, partnership with 2 other agencies, sharing of research in conferences and conventions to increase adoption and publicize the model. It is envisioned that the outcomes achieved in Region IVA through program integration will be scaled up to more regions in the coming months.

